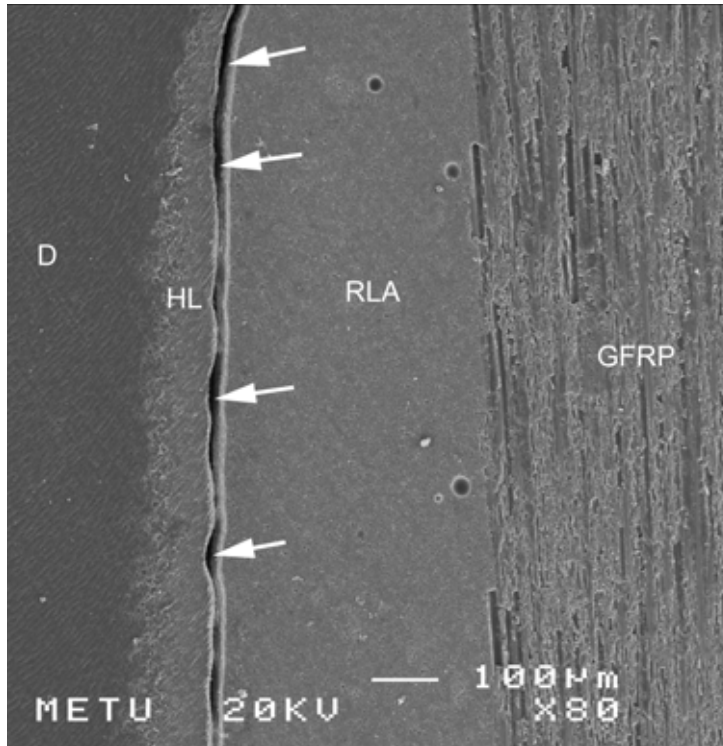
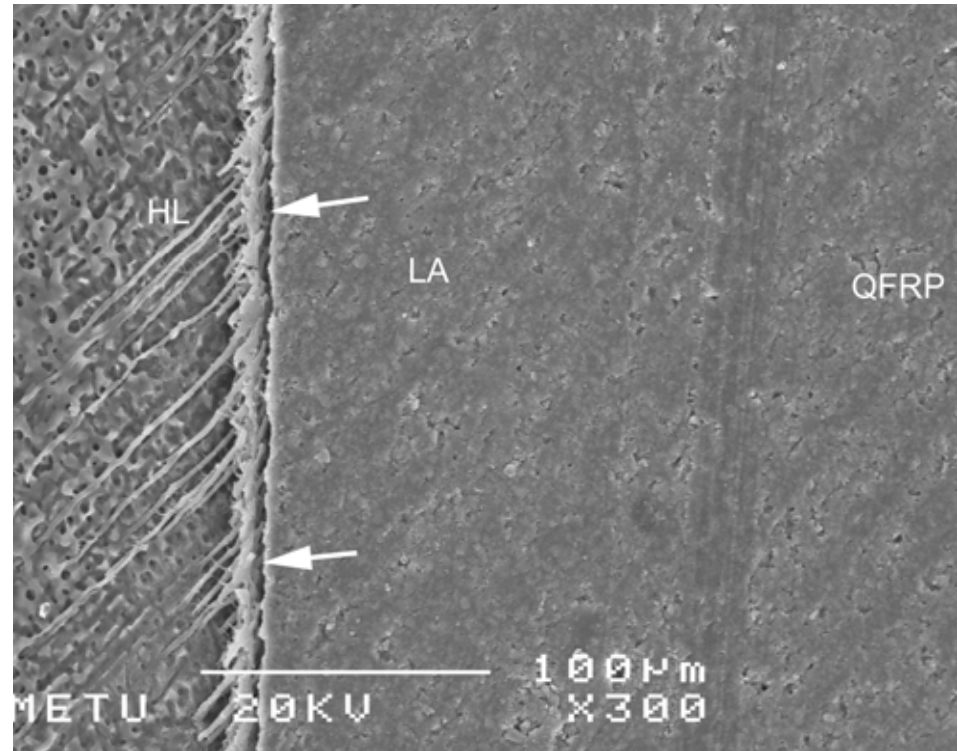


# Glass fiber post system in canal

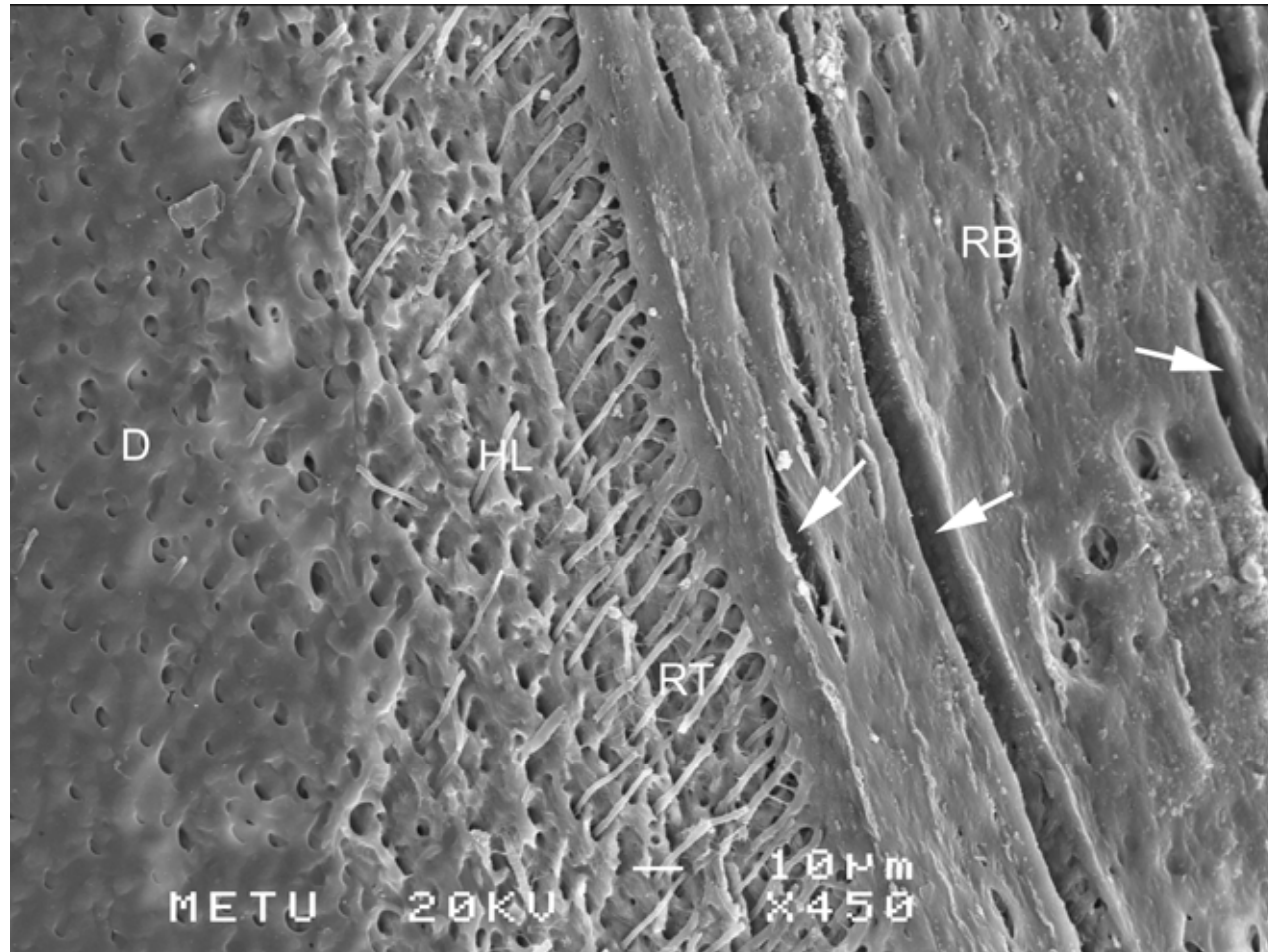


**Fig. 1.** D: Dentin; HL: Hybrid layer;  
RLA: Resin based luting agent;  
GFRP: Glass fiber reinforced post.  
Arrows indicates detachment



**Fig. 2.** D: Dentin; HL: Hybrid layer;  
LA: Resin based luting agent;  
QFRP: Glass fiber reinforced post.  
Arrows indicates detachment

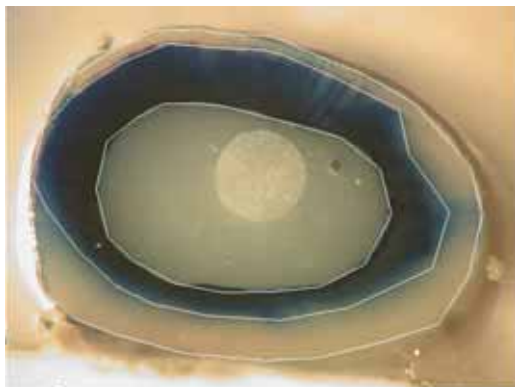
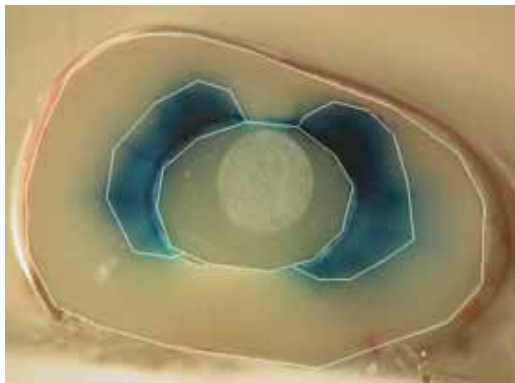
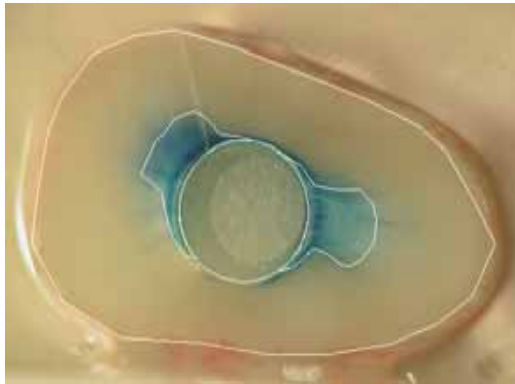
# Ribbon post system in canal



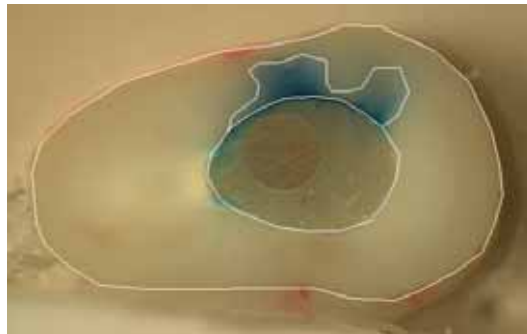
**Fig.3.** D: Dentin; HL: Hybrid layer; LA: Resin based luting agent; RB: Polyethylene fiber reinforced post. Arrows indicates detachment

# Leakage

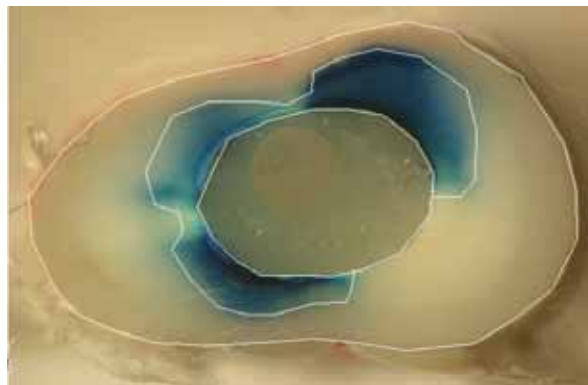
Glass Fibre reinforced prefabricated post.



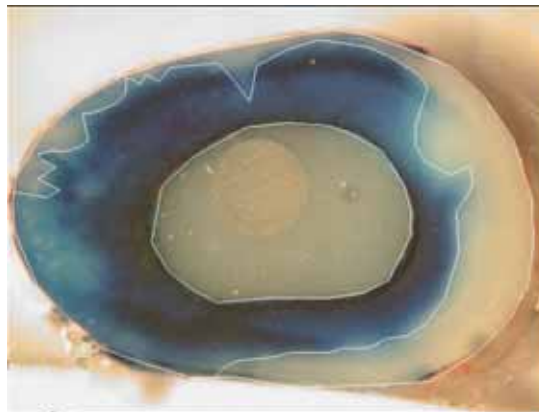
Quartz fibre reinforced prefabricated post



APICAL SECTION



MIDDLE SECTION



CORONAL SECTION

Ribbon

