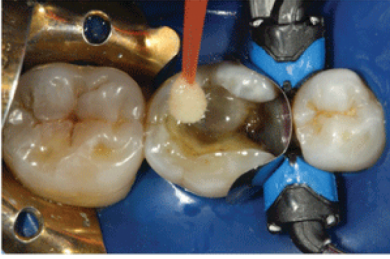


Technique

Step 1



The tooth is prepared for bonding and a bonding adhesive is applied.

Photos courtesy of: Isaias Iniguez, D.D.S.

Step 2

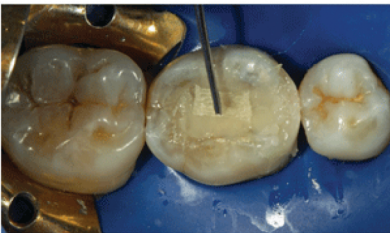


The proximal wall is built-up with composite. A flowable composite is placed in the bed of the preparation and is also placed against the interior walls of the prepared tooth. Ribbond pieces are wetted with bonding resin and the Ribbond pieces are pressed through the flowable composite against the tooth surfaces covering as much of the interior tooth surfaces as possible.

Step 3

The Ribbond pieces are cured and composite is incrementally placed into the preparation.

Step 4



To further reduce the risk of the tooth fracturing a piece of Ribbond is placed in the composite approximately 1.5 mm below what will become the occlusal surface of the tooth.

Step 5



The occlusal surfaces are built-up with composite.